

# SPEC SHEET + MEASUREMENTS



Mercer+Mettle® Women's Long Sleeve Twill Overshirt.

MM2021

## Product photo



Boardroom-bound or loosely layered, this versatile twill overshirt combines the clean design of a blazer with just the right amount of stretch. The result fits in at work, at home and anywhere in-between. **Fabric+Weight**

- 7.2-ounce, 69/29/2 poly/rayon/spandex stretch twill

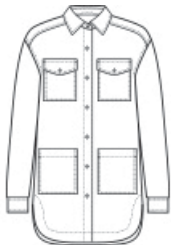
### Features+Benefits

- Open collar
- Faux horn-rimmed buttons
- Double chest pockets with button flaps
- Drop shoulders
- Deep back yoke with wide box pleat
- Lower patch pockets
- Adjustable rounded cuffs
- Longer length
- Rounded hem

### CARE INSTRUCTIONS

Machine Wash Cold With Like Colors. Do Not Bleach. Tumble Dry Low. Remove Promptly. Cool Iron If Necessary.

## Sketches



front



back

## PRODUCT MEASUREMENTS

---

	XS	S	M	L	XL	2XL	3XL	4XL
Body Length at Back	33 1/4	33 3/4	34 1/4	34 3/4	35 1/4	35 3/4	36 1/4	36 3/4
Bust	21	22	23	24 1/2	26	27 1/2	29 1/2	31 1/2
Pocket Height	6	6 1/4	6 1/4	6 1/4	6 1/4	6 1/2	6 1/2	6 1/2
Pocket Width	4 3/4	5	5	5	5	5 1/4	5 1/4	5 1/4
Size	2	4/6	8/10	12/14	16/18	20/22	24/26	28/30
Sleeve Length from Center Back	31 1/2	32	32 1/2	33 1/8	33 3/4	34 3/8	34 3/4	35 1/8

**Body Length at Back:** Measured from high point shoulder to finished hem at back.

**Bust:** Measured across the chest one inch below armhole when laid flat.

**Pocket Height:** Measure from top to bottom at center.

**Pocket Width:** Measure from side to side at top edge.

**Sleeve Length from Center Back:** Measure from Center Back neck to shoulder point to sleeve hem.

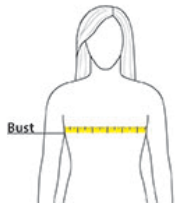
## SIZE CHARTS

---

	XS	S	M	L	XL	2XL	3XL	4XL
Bust	32-34	35-36	37-38	39-41	42-44	45-47	48-51	52-55
Size	2	4/6	8/10	12/14	16/18	20/22	24/26	28/30

## HOW TO MEASURE

---



### **BUST**

Measure under the arm and around the fullest part of the bust with arms down, keeping tape horizontal.

## COLORS

---

Please note: PMS code information is shown only when an exact match is available.



Deep Black  
PMS Black C



Light Anchor  
Grey Heather