

# SPEC SHEET + MEASUREMENTS

*Eddie Bauer*

Eddie Bauer® Women's Stretch Soft Shell Vest. EB547

## Product photo



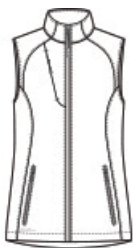
This fleece-lined vest offers next-level mobility and performance thanks to 3K/3K waterproof, breathable fabric with 4-way stretch and a durable water-repellent (DWR) finish.

- 90/10 polyester/spandex bonded to a waterproof film insert and 100% polyester fleece lining
- Interior storm flap
- Chin guard
- Invisible zippered chest pocket
- Reverse coil center front zipper
- Eddie Bauer logo zipper pull
- Reverse coil zippered hand pockets
- Embroidered Eddie Bauer logo on right hem
- Longer length

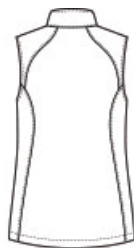
## CARE INSTRUCTIONS

Machine Wash Cold With Like Colors. Do Not Use Fabric Softener. Do Not Bleach. Tumble Dry Low. Cool Iron. Do Not Dry Clean.

## Sketches



front



back

## PRODUCT MEASUREMENTS

---

	XS	S	M	L	XL	2XL	3XL	4XL
Body Length at Back	27	27 1/2	28	28 1/2	29	29 1/2	30	30 1/2
Bust	17 1/2	18 1/2	19 1/2	21	22 1/2	24	26	28
Size	2	4/6	8/10	12/14	16/18	20/22	24/26	28/30

---

**Body Length at Back:** Measured from high point shoulder to finished hem at back.

**Bust:** Measured across the chest one inch below armhole when laid flat.

## SIZE CHARTS

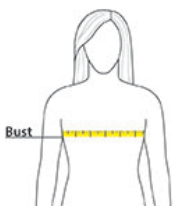
---

	XS	S	M	L	XL	2XL	3XL	4XL
Bust	32-33	34-35	36-37	38-40	41-43	44-46	47-49	50-52
Size	2	4/6	8/10	12/14	16/18	20/22	24/26	28/30

---

## HOW TO MEASURE

---



### BUST

Measure under the arm and around the fullest part of the bust with arms down, keeping tape horizontal.

## COLORS

---

Please note: PMS code information is shown only when an exact match is available.



Deep Black  
PMS BLACK C



Iron Gate  
PMS 7540C



River Blue  
Navy  
PMS 533C